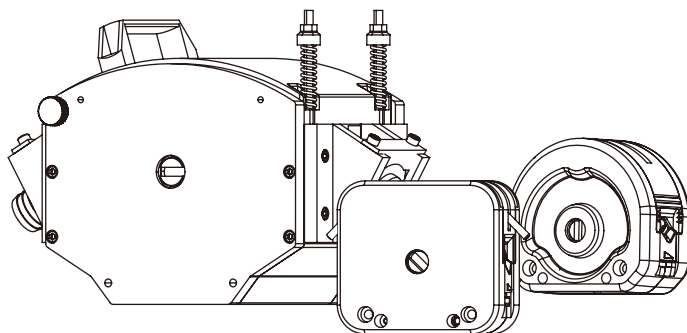


---

# PRODUCT INSTRUCTION MANUAL

---

KZ Series



## Quick Installation Peristaltic Pump Head

//Thank you for choosing Chuangrui peristaltic pump head, please read this manual carefully before use to ensure correct operation, use effect and product maintenance.// V1.2.1

## Important information

---

Please read this product instruction manual carefully before using the product!

The contents of this product instruction manual are for reference only.

Chuangrui Pump Industry reserves the right to change the product (design or specification) without prior notice.

---

### Safety warning

- Do not reach out and touch the roller when it is running!
- Before any cleaning or maintenance work, be sure to cut off the power supply.
- As the tube is worn for a long time, it may produce cracks and cause the liquid to overflow. It is necessary to check regularly and replace the tube in time!
- If the following situations occur, turn off the power and unplug the power plug:
  1. The tube is broken and the fluid causes the pump head to be contaminated.
  2. When you think the pump head needs maintenance or repair.
  3. The product is abnormal.
- Please load and unload the pump head and hoses in the power-off state to prevent accidental touching of the switch and cause danger.



- \* This instruction manual applies to KZ series pump heads. All kinds of pump heads derived from this series of pump heads can also be implemented by reference.

# CONTENTS

---

<b>Precautions</b>	Tube precautions .....	1
	Roller recautions .....	1
	Product storage .....	1

---

<b>Product description</b>	Product introduction .....	2
	• Pump head model .....	2
	Technical parameter .....	2
	Structure display .....	3
	• Size(mm) .....	4

---

<b>Operation and installation</b>	Pump head installation .....	5
	Tube installation .....	6

---

<b>Product maintenance and after sales</b>	Fault diagnosis .....	8
	Maintenance .....	8
	Warranty information .....	9
	Repair information .....	10

---

Disclaimer .....	10
------------------	----

---

Appendix 1:1 comparison table of tube size .....	11
--	----

---

## Precautions

### >> Precautions

---

Please read the operating instruction manual carefully before operating this equipment.

- The staff responsible for the installation or maintenance of this equipment should have the experience and ability to carry out related work.
- When pumping dangerous liquids, please follow safety precautions.
- Please determine whether you need to wear personal protective equipment when operating the pump in accordance with the nature of the transfer fluid and industry specifications.
- For hazardous fluids, a dedicated operation process must be specified to prevent personal injury.
- Do not refit this product by yourself. If you need to repair it, please contact the office of Chuang Rui.

### Tube precautions

- In the event of a tube failure, ensure that the fluid in the pump tube of the pump head can be discharged to a suitable container or drain.
- A ruptured tube may cause fluid to splash. Please take appropriate protective.
- When disassembling the tube, it is necessary to drain the medium and cut off the power supply to ensure that the pipeline is pressure-free.
- Ensure that the chemicals to be handled are compatible with the pump head, tubes and Accessories.

### Roller precautions

- Do not touch the rollers and rotating spindle when the pump is running.
- Keep the rollers clean and dry to reduce tube wear.
- Do not lubricate the pump head rollers by yourself. Improper operation may cause the tube to run out or the pump head shell to corrode.

### Product storage

- The product should be placed in a well-ventilated, non-corrosive storage environment, which can be stored for a long time, but before putting it into installation and operation, please confirm that the pump head nails, rollers and other parts can be used normally.

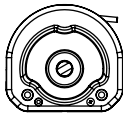
# Product description

## Product description

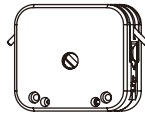
### Product introduction

KZ series pump head has good rigidity and stable structure, and can carry out large-flow and ultra-large-flow liquid transmission. The upper pressure block is designed separately from the pump head, which is convenient for installation and maintenance of hoses. Stainless steel rollers are corrosion-resistant and have a long service life. Support OEM, ODM customization to meet different production needs.

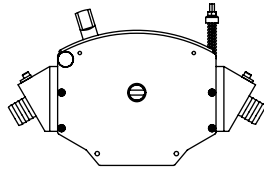
#### • Pump head model



KZ25



KZ25L



KZ50/KZ50-SS

### Technical parameter

Model	Channel	Roller Material	Rollers	Shaft end	Shell material
KZ25	1	Stainless steel	3	Round shaft /flat shaft	ABS/PPS-White PC/PPS -transparent
KZ25L	1	Stainless steel	3	Round shaft /flat shaft	Aluminum alloy /Stainless steel
KZ50	1	Stainless steel	4	Round shaft	Aluminum alloy
KZ50-SS	1	Stainless steel	4	Round shaft	Stainless steel

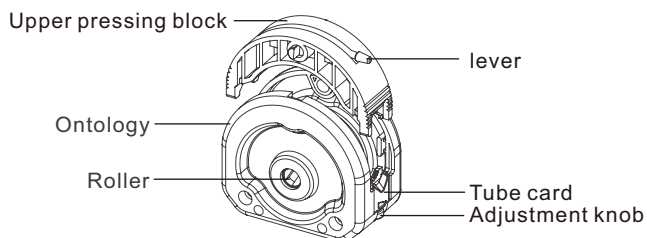
Pump head	Tube	ID*wall thickness (mm)	Max speed (rpm)	Max flow (mL/min)
KZ25 KZ25L	15#	4.8*2.4	600	1800
	24#	6.4*2.4	600	3000
	35#	7.9*2.4	600	4200
	36#	9.6*2.4	600	6000
KZ50/KZ50-SS	92#	25.4*4.8	350	33000

#### Test conditions:

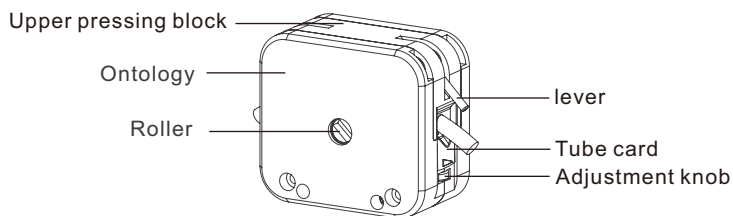
1. Flow data testing environment for room temperature 20-25 °C, relative humidity is not greater than 80%, altitude is not greater than 1500 metres above sea level
2. The test is measured using a straight-through pipe with a suction range of 0.5 m, a head of no more than 0.5 m, and a total pipe length of no more than 1.5 m (inlet end + outlet end + test end)

The above data test environment for normal temperature and pressure, the test fluid is water, the data is for reference only, please refer to the actual standard.

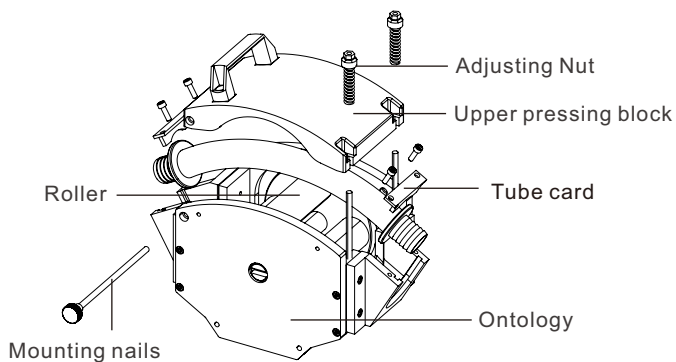
Structure display



KZ25



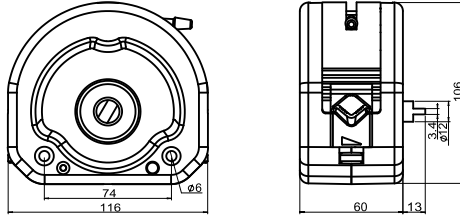
KZ25L



KZ50/KZ50-SS

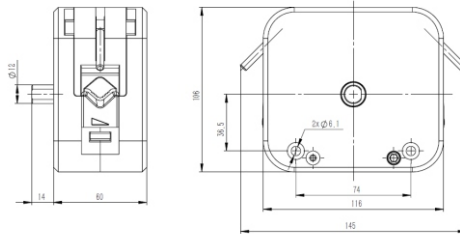
• Size (Unit:mm)

KZ25 Dimensions



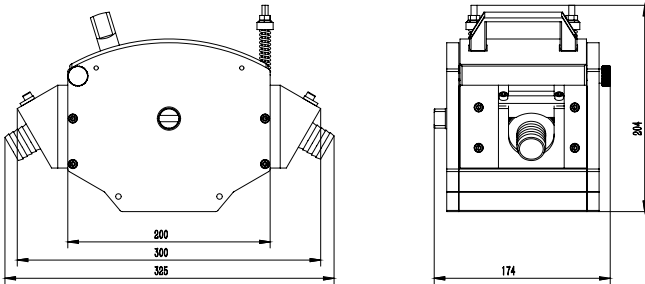
116x73x106 mm

KZ25L外形尺寸图



145x74x106 mm

KZ50/KZ50-SS Dimensions



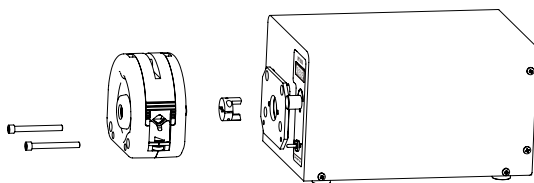
325x174x204 mm

## Operation and installation

### Operation and installation

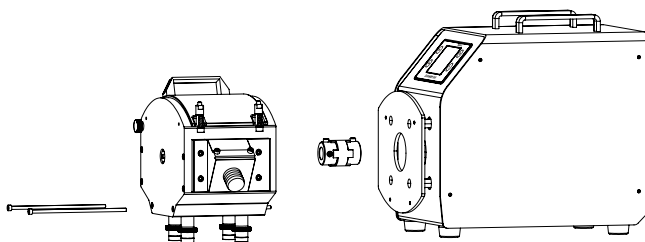
#### Pump head installation

##### KZ25/KZ25L Pump head installation



- >> **Connect with the drive (KZ25/KZ25L):** Insert the two special screws into the mounting holes on the pump head respectively, then insert the pump head shaft into the coupling groove, and finally align the pump head screws with the drive connecting holes and tighten.

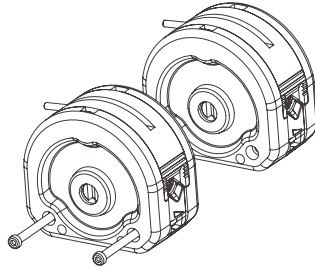
##### KZ50/KZ50-SS Pump head installation



- >> **Connect with the drive ( KZ50/KZ50-SS ) :** Insert the two special screws into the mounting holes on the pump head respectively, then insert the pump head shaft into the coupling groove, tighten the two screws of the coupling with an Allen wrench, and finally align the pump head screws with the drive connection Tighten the hole.



Pump head in series



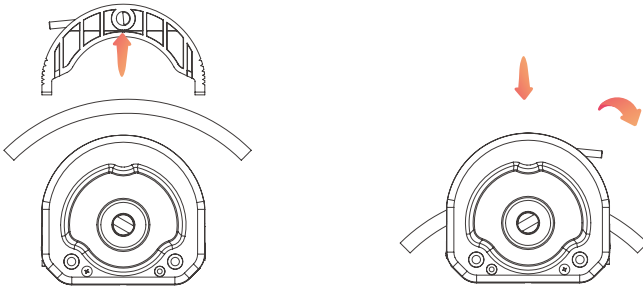
>> **Multi-level connection (KZ25/KZ25L/KZ50/KZ50-SS):** When multiple pump heads are connected in series, the extension screw is used to connect, and the pump head shaft of the former pump head can be inserted into the connection hole of the latter pump head.

**Warning:** Before installing the pump head, be sure to cut off the power.

**Note:** The user should try to tighten the two pump head screws with the same force, and it should not be too tight to prevent the lower support from deforming and causing running noise.

Tube installation

KZ25/KZ25L Tube loading steps

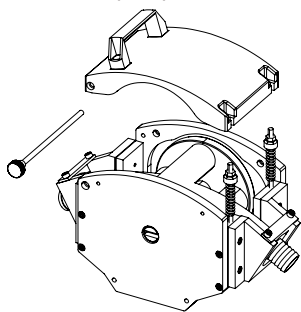


1. Remove the pump casing and install the hose on the roller

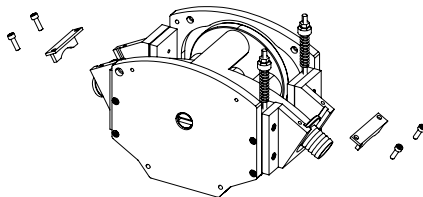
2. Insert the card into the groove of the pump head, the installation is complete

KZ50/KZ50-SS Tube loading steps

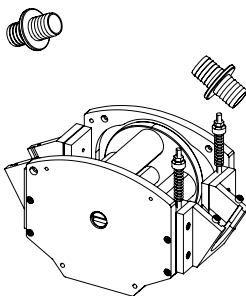
**Note:** The pump head must be of standard wall thickness hose, see P2



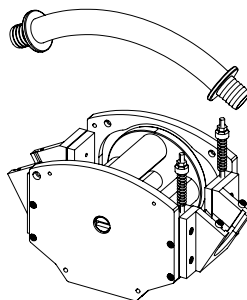
1. Remove the pressure block



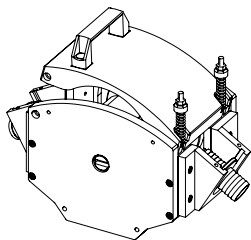
2. Remove the Tube Clip



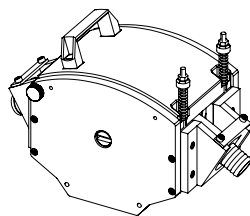
3. Remove the fitting



4. Install the pump tubing in the fitting



5. The accessories are restored, and the upper pressure block is closed



6. Tube is complete

## Product maintenance and after sales

### Product maintenance and after sales



Warning: Before attempting any maintenance work, be sure to cut off the power to the pump.

### Fault diagnosis

<p>*The pump is turned on and the pump head cannot run</p>	<p>&gt;&gt;Check if the coupling is damaged &gt;&gt;After cutting off the power, manually check whether the pump head is rotating normally</p>
<p>*Low or no flow when the pump is running</p>	<p>&gt;&gt;Check whether the material supply is normal &gt;&gt;Check if the pipe is entangled or blocked &gt;&gt;Check that all valves are open &gt;&gt;Check if the tube is in the middle of the roller &gt;&gt;Check whether the tube is cracked or damaged &gt;&gt;Check the running direction &gt;&gt;Check whether the pump head roller can rotate flexibly</p>

### Maintenance

- ① Open the pump head when it is not working to avoid tube deformation caused by prolonged extrusion.
- ② Keep the pump head rollers clean and dry to prevent surface damage and reduce tube wear; if there is splashing liquid, please wipe it dry as soon as possible.
- ③ Check the wear of the tube regularly and replace it in time to prevent leakage.
- ④ The pump head roller does not need to add lubricating oil, and improper operation may cause the tube to shift or corrode.
- ⑤ Not used to deal with chemical substances incompatible with the pump head or tube.
- ⑥ The pump head is not resistant to organic solvents and strong corrosive liquids. Please deal with it in time if there is effusion.
- ⑦ When there are stubborn stains on the surface, please use a mild detergent to scrub. Do not immerse the machine in liquid or use too much liquid to clean it.

## Warranty information

### ·Warranty commitment

- ①The product has a one-year warranty period. If there is a failure during the warranty period, you can enjoy free maintenance and replacement of parts; if it is damaged by humans, it will not be included in the warranty scope.
- ②If the warranty period is exceeded, only cost will be charged for repairs.

**Note:** Any employee or distributor has no right to change or violate the above warranty terms. Chuangrui is only responsible for repairing, replacing or refunding the product in accordance with the actual use of the product and the reasonable compliance requirements of the customer.

### ·Relevant details

- ① Chuangrui will not be responsible for any direct or indirect losses caused by external reasons such as operating errors or human negligence that are not the product's own quality problems.
- ② Chuangrui will not be responsible for the transportation damage caused by the returned products and accessories during the return journey.
- ③ In any case, the compensation cost received by the customer shall not exceed the actual payment price.

### · Non-warranty scope

The following conditions are not included in the free maintenance of the warranty:

- ①The product has exceeded the warranty period.
- ②Product failure caused by abuse, misuse or accidental damage by Chuangrui's judgment.
- ③Product problems caused by ultraviolet rays or direct light.
- ④It is not the damage caused by after-sales personnel in the repair or disassembly process.
- ⑤Damage caused by chemical erosion or long-term improper maintenance.
- ⑥Product failure caused by force majeure factors such as natural disasters.
- ⑦The operator fails to follow the corresponding operation suggestions and requirements, improper loading and unloading, improper maintenance, and improper operation.
- ⑧ Failures or damages that are not caused by the quality of the product itself.

**Note:** Chuang Rui reserves the right to modify the above terms at any time.

## Repair information

- ① If there is a product that needs to be returned/repared, please contact the sales, distributor or Chuangrui official according to the delivery related process to quickly solve the after-sales problems such as return, replacement, and repair;
- ② If there is no special agreement or written instructions, please return and exchange the goods within the specified time;
- ③ When applying for after-sales service, please provide a clear reason for the return, specific information about the contacted substances, and responsible for the cleaning of the product (especially products that have been exposed to toxic chemical substances or harmful substances to the human body)
- ④ When returning the product to the factory, please pay attention to the packaging specifications to prevent damage to the pump during transportation; Chuang Rui will not be responsible for product damage caused by improper packaging and will not be included in the warranty.

## Technical support & After-sales

For official technical support and after-sales questions, please consult:

**Address: NO.369 of HuiYang Street , Baoding 071000 , Hebei , China**

**Telephone: +86 15633705132**

**Website : [www.crpump.com](http://www.crpump.com)**

### \*Disclaimer

- The content of this operation manual is for reference only.
- Chuang Rui reserves the right to change the product (Design or specification) without prior notice.
  - We formulate the information in this document from a correct perspective, but Chuangrui will not be responsible for any errors.
  - If you need the latest version of the operation manual, please contact Chuang Rui official.
  - Chuangrui will not be responsible for any loss caused by non-product quality problems or human errors.

### Warning:





This product is not suitable for equipment with its own problems.

Do not place this product in hazardous work areas, flammable and explosive environments.


## Appendix 1:1 comparison table of tube size

### 1:1 comparison table of tube size .....

#### KZ25 applicable tube

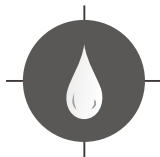
Tube		15#	24#	35#	36#
Tube section (1:1)					
Wall thickness (mm)		2.4			
Inside diameter (mm)		4.8	6.4	7.9	9.6
Pressure (Mpa)	Continuous	0.17		0.14	
	Interval	0.27		0.24	

#### Kz50 applicable tube

Tube		92#
Tube section (1:1)		
Wall thickness (mm)		4.8
Inside diameter (mm)		25.4
Pressure (Mpa)	Continuous	0.14
	Interval	0.14



BAODING CHUANG RUI PRECISION PUMP CO. , LTD.



**Address:** NO.369 of HuiYang Street, Baoding 071000, Hebei, China

**Mobile:** +86 15633705132    **E-mail:** support@crpump.com

**Website:** <https://www.crpump.com>

