

## Warranty Information

Professional Fluid Transfer

CHONRY 创锐

### Warranty Commitment

- The product warranty period is one year. If there is a failure during the warranty period, you can enjoy free maintenance and replacement of parts; if it is damaged due to human beings, it will not be included in the warranty scope.
- After the warranty period, only the cost of maintenance will be charged.

**Note:** No employee or dealer has the right to change or violate the above warranty terms. Chuangrui is only responsible for repairing, replacing or refunding the product according to the actual use of the product and the customer's reasonable and compliance requirements.

### Warranty Details

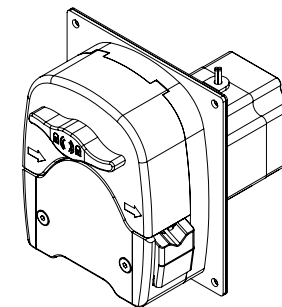
- If it is not a product quality problem, it is caused by external reasons such as operational errors or human negligence.No responsibility for direct or indirect losses.
- We are not responsible for any transport damage caused by returned products and accessories during the return journey.
- For the product, in no case shall the cost of compensation received by the customer exceed the actual payment price.

### Disclaimer Information

- The contents of this operation manual are for reference only.
- Chuangrui Pumps reserves the right to make changes to products (design or specifications) without prior notice profit.
- The information contained in this article is formulated from the correct point, and we will not be responsible for any errors.
- If you need the latest version of the operation manual for this product, please contact Chuangrui official.
- We are not responsible for any loss caused by non-product quality problems or human error.



# QUICK ACTION GUIDE UCP328



BAODING CHUANG RUI PRECISION PUMP CO., LTD.

**Address:** NO.369 of HuiYang Street, Baoding 071000, Hebei, China

**Mobile:** +86 15633705132 **E-mail:** support@crpump.com

**Website:** <https://www.crpump.com>

BAODING CHUAGN RUI PRECISION PUMP CO., LTD.

Please read this manual carefully before operation

V1.0



## Product description

The GY1514 pump head is a high-pressure pump head. The housing is made of aluminum alloy and the roller is made of stainless steel. It is wear-resistant, corrosion-resistant, has a long life, is easy to operate, and is convenient for loading and unloading hoses. The fluid delivery performance is stable and the maximum flow rate can reach 330mL/min.

## Pump head parameters

Model	GY1514
Max speed	450rpm
Max flow	330mL/min
Channel	1
Roller	4
Tube	Tygon E3603(14#, 16#)
Roller Material	Stainless steel
Available motors	57 stepper closed loop motor
Weight	1.54kg
Output pressure	> 0.6Mpa(14#), > 0.4Mpa(16#)(Measured at 200 rpm)
Working environment	Ambient temperature 0 ~ 40°C, relative humidity <80%

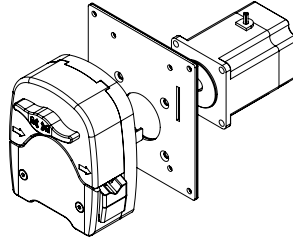
## Motor parameters

Number of phases	2	<p>Wiring Diagram</p>
Step Angle	1.8°	
Rated voltage	4.32 V DC	
Rated current	2.2Amp	
Holding torque	1.25N.m	
Motor weight	610 g	
Insulation class	B(130°)	

## ⚠ Safety warning

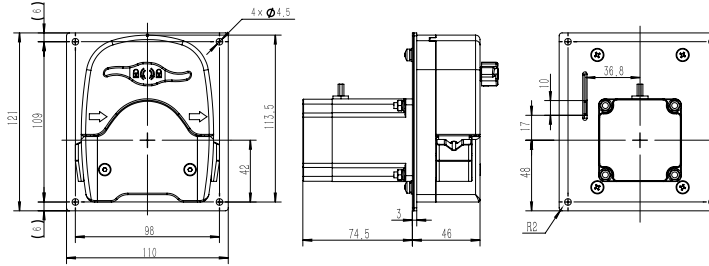
The tube may be cracked due to wear and tear, causing the liquid to overflow from the tube, which may cause harm to the human body and equipment, so check frequently and replace the tube in time! It is forbidden to open the upper pressure block during the operation of the product, and it is strictly forbidden to contact the rotating parts such as the pump wheel with fingers or sundries. To ensure personal and equipment safety, be sure to disconnect the drive from power before cleaning or maintenance.

## Pump head structure



Pump head → Pump head mounting plate → Motor connection plate → Matching motor

## Installation size(mm)



UCP328 Installation size: 98X46X113.5 mm

## Tube selection and flow reference

Pump head	Tube	ID*wall thickness (mm)	Max flow (mL/min)	Max speed (rpm)	Applicable hose
GY1514	14#	1.6*4.8	90	450	Tygon E3603
	16#	3.2*6.4	330	450	

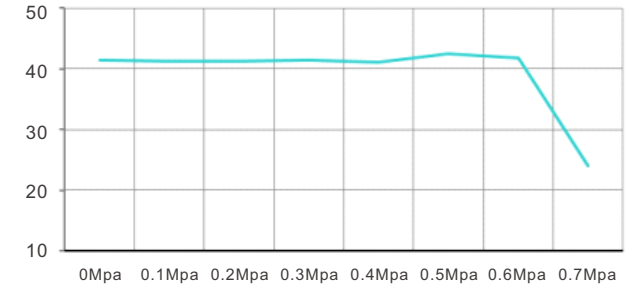
### Test conditions:

- Flow data testing environment for room temperature 20-25 °C, relative humidity is not greater than 80%, altitude is not greater than 1500 metres above sea level.
- The test is measured using a straight-through pipe with a suction range of 0.5 m, a head of no more than 0.5 m, and a total pipe length of no more than 1.5 m (inlet end + outlet end + test end)

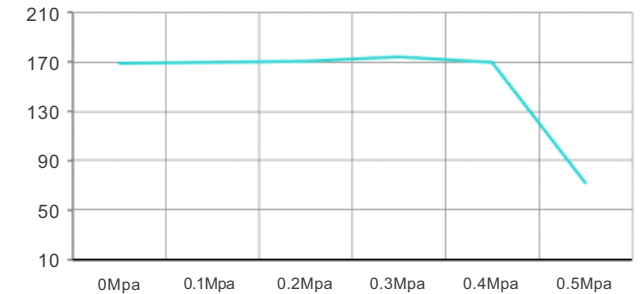
The above data test environment for normal temperature and pressure, the test fluid is water, the data is for reference only, please refer to the actual standard.

## Flow curve chart

14# 3603 Pressure-Flow Curve



16# 3603 Pressure-Flow Curve



## Tube installation

### Installation steps

- ① Turn the knob counterclockwise to open the pressure block on the pump head.
- ② Put the matching hose on the roller and place both sides on the pipe clamp.
- ③ Turn the knob clockwise to close the upper pressure block, and the pump tube installation is complete.